



# The Del Hughes Awards

*for Lifetime Achievement  
in the Art of Stage Management*

STAGE MANAGERS' ASSOCIATION

SEPTEMBER 23, 2019  
CONNOLLY'S, TIMES SQUARE

# STAGE MANAGERS MAKE IT HAPPEN

USITT is pleased to celebrate the art of stage management and the work of this year's Del Hughes Award winners. Congratulations.



**STAGE MANAGEMENT MENTOR PROJECT**  
each year at our Annual Conference & Stage Expo  
[usitt.org](http://usitt.org)

**usitt**

# Program

SMA

---

Welcome

**Cheryl Mintz**

*Chair of the Awards & Recognition Committee and Del Hughes Event  
Director at Large of the Stage Managers' Association*

Opening Remarks

**Elynmarie Kazle**

*Chair of the Stage Managers' Association*

Masters of Ceremonies

**Bill Hare, Elynmarie Kazle, Cheryl Mintz, and Matt Stern**

**Elizabeth Franz**

to introduce Del Hughes honoree

**Rich Costabile**

**Meredith Greenburg**

to introduce Del Hughes honoree

**Barbara Donner**

**George C. Wolfe**

to introduce of Del Hughes honoree

**Mary K Klinger**

**Arturo E. Porazzi**

to introduce Founders Award honoree

**Janet Friedman**

Closing Remarks

**Cheryl Mintz**

---

**Del Hughes Award Event Committee**

Cheryl Mintz, Chair

John Concannon, Bill Hare, Elynmarie Kazle, Robert Mills,  
Melissa A. Nathan, Matt Stern, Adrienne Wells,  
and Mark A. Zimmerman

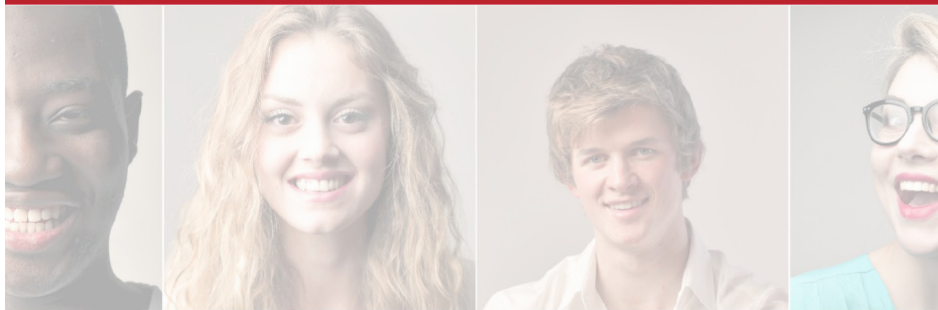
**Special Thanks**

Robert Sutherland-Cohen, Monique Bernier  
Broadway Stage Management Symposium





**Stage Managers' Association  
members are now eligible to join  
Actors Federal Credit Union!**



***Learn about the benefits  
of membership online  
[ActorsFCU.com/SMA](https://ActorsFCU.com/SMA)***

---

*Federally Insured by NCUA.*





# Welcome

SMA

---

It is my pleasure to welcome you to the Del Hughes Awards. I first want to thank the Awards and Recognition Committee, along with the Del Hughes Award Event Committee, and most especially Cheryl Mintz for taking the reins for this important event. She has planned a great evening for our community and awardees.

When the SMA was formed 39 years ago, stage managers from the New York theatre community came together in an effort to give a voice to those in our profession. This part of our mission continues today. We started as a group small enough to sit around a table at a pub and now we are nearly 1000 members strong with representatives and members in nearly 50 states. Thanks to the efforts of Hope Rose Kelly, we have joined with stage manager groups on six continents and with countries throughout the world. We represent the best and the brightest -- those who, while pursuing our honorable profession, choose to support the advancement of our field, the protection and continued development of those within it, and to do this without regard to type of live entertainment, union affiliation, or geographical location.

It is my hope that you will keep us in mind when called upon to provide help to a promising young manager or even mid-career stage manager. It is also my hope that you will consider being a part of our efforts. It is up to us to ensure the continued development, recognition, and involvement of the American stage manager.

*Elynmarie Kazle, Chair of the SMA*

## *About the Stage Managers Association*

The SMA, whose inception is traced to 1981, is the only professional organization for working stage managers across the United States. Our mission is to recognize, advocate for, and provide continuing education and networking opportunities for stage managers across the USA.

The SMA strives for equity, fairness, diversity and inclusion. As stage managers we are discreet in our dealings with productions, producers and employers. We respect and value diverse life experiences and heritages, strive toward equitable treatment of our members, and support members who nurture diversity and equity in their places of work and in their broader communities.

Our NYC roots, networking and education remain an important part of the association today. SMA members, over 900 strong, are united for a common cause: to advocate for and recognize stage managers for the work we do in the entertainment profession.

# Tools for all Stages of your Career

SMA

---

**OPERATION OBSERVATION** (our oldest program) Observe seasoned professionals in action. We facilitate this observation or shadowing for members and others who generously open their backstage processes to others.

**STANDING IN THE DARK®:** A series of audio and video conversations with prominent stage managers: on their career, family and working regionally.

**JOB POSTINGS:** Hundreds of the latest job opportunities delivered directly to our membership and posted on the website. Employers post free of charge.

**VIEW FROM THE WINGS / WEBINARS / LECTURES SERIES / SPEED DATING:** Online and in person symposia and conferences that cover hot topics, with prominent industry experts on topics that most interest our membership.

**NATIONAL RECOGNITION:** The SMA honors professional stage managers annually with the Del Hughes Award for Lifetime Achievement as well as other national honors.

**COLLABORATIVE CONNECTIONS MENTORING** for members at all levels of their career. Get the advice you need from seasoned professionals, farther along the path, in any area of entertainment management. A way for the seasoned pro to *give back* to the industry.

**WEBSITE:** Find out what's going on in the world of Stage Management, or how that new gizmo is being used by other SMs. Over 200 links to articles on Stage Management, "how to" recordings, document library and interviews; are all a part of our website library.

**SM GO/COMMUNITY:** Let the Stage Managers' Association provide support for a project or your next get together of local Stage Managers, no matter where in the country.

**INTERNATIONAL COMMITTEE:** through our new international initiative, we have now have active contacts with Stage Manager Associations on all seven continents.

**NATIONAL SM GUIDE RESPONDENT PROGRAM:** A program where professionals are the resource for collegiate theatre programs with a need for trained stage managers without the benefit of a stage management program.

(ROLLING OUT FALL 2019)

# The Del Hughes Award

SMA

The Del Hughes Award for Lifetime Achievement in the Art of Stage Management is presented by The Stage Managers' Association to acknowledge a professional who exhibits the finest qualities of stage management: patience, diplomacy, organization, and a sense of humor.

Del Hughes (1909-1985) was an American theater performer, stage manager, and television director. Prior to establishing his career as a stage manager, Hughes performed in several Broadway productions, including *Vickie* (1942), *Yours, A. Lincoln* (1942) and *Open House* (1947). Hughes managed dozens of Broadway productions, including the premiere of Arthur Miller's *Death of a Salesman* in 1949 at the Morosco Theater, as well as works by Lillian Hellman and Graham Greene. In the late 1960s and early 1970s, Hughes directed episodes of the television dramas "One Life to Live" and "All My Children." The Del Hughes prompt books, archived in the Billy Rose Collection at the New York Public Library at Lincoln Center, date from 1943 to 1968 and represent twenty-four Broadway productions.

Upon his passing in 1985, his daughter, Julie Hughes, created a legacy for her father with the Stage Managers' Association -- the Del Hughes Lifetime Achievement Award in the Art of Stage Management. In 1986, the first award was presented to Phil Friedman.

## Honorees

- 1986 Phil Friedman
- 1987 Anne Sullivan
- 1988 Fritz Holt
- 1989 Bill Dodds
- 1990 Ruth Mitchell
- 1991 Samuel "Biff" Liff
- 1992 Morty Halpern
- 1993 Jerry Adler
- 1995 Jose Vega
- 1999 Anne Keefe
- 2010 Susie Cordon, Alan Hall, Porter Van Zandt
- 2011 Joseph Drummond, Beverley Randolph, Steve Zweigbaum
- 2013 Bob Bennett, Peter Lawrence, Perry Silvey
- 2014 Tom Kelly, Martha Knight, Jimmie McDermott
- 2015 Frank Hartenstein, Craig Jacobs, Jill Rendall
- 2016 David Piel, John Fennessy
- 2017 Buzz Cohen, Malcolm Ewen, Arturo E. Porazzi
- 2018 Maxine Glorsky, Lyle Raper, Roy Harris



# Standing in the Dark

SMA

Under the leadership of Elynmarie Kazle and initiated by Rachel Zucker, the Stage Managers' Association began to record interviews of career stage managers through two series, *Women of Broadway* (interviewed by Amanda Berry) and *The Legacy Project*, under the banner of *Standing in the Dark*. These recordings are made available to the public on a rotating basis via our website at [stagemanagers.org](http://stagemanagers.org). For access to the full library which is continually updated through the work of the Stage Manager History Committee. SMA members must sign in at [stagemanagers.org](http://stagemanagers.org) to listen to the entire series.

## Recordings currently available

<b>Mary Beth Abel</b>	<b>Mary K Klinger</b>
<b>Jerry Adler</b>	<b>James Latus</b>
<b>Perry Cline</b>	<b>Valerie Lau-Kee Lai</b>
<b>Buzz Cohen</b>	<b>Peter Lawrence</b>
<b>Robert I. Cohen</b>	<b>James T. McDermott</b>
<b>Jill Cordle</b>	<b>Ira Mont</b>
<b>Heather Cousens</b>	<b>Karen Moore</b>
<b>Joseph Drummond</b>	<b>Bonnie Panson</b>
<b>Malcolm Ewen</b>	<b>Michael Passaro</b>
<b>Keith Fort</b>	<b>Lyle Raper</b>
<b>Bess Marie Glorioso</b>	<b>Charlene Speyerer</b>
<b>Cindy Kearns</b>	<b>Peter Von Mayrhauser</b>
<b>Amber White</b>	

Thanks to the committee/interviewers for the ongoing work to preserve the voices of career stage managers: Elynmarie Kazle, (*the Legacy Project*), Mandy Berry, (*Women of Broadway*) Hope Rose Kelly, Editor SMA Website and Nancy Ann Adler, Bob Bennett, Andrew Feigin, Janet Friedman, Patricia Sutherland Cohen, William T. Jones, Els Collins, Joseph Drummond, David McGraw, Judy Martel, Marguerite Price, Evelyn Plummer, John Saluz (podcast editor), Matthew Stern, and Rachel Zucker.

To nominate a stage manager for inclusion in either series, please go to [stagemanagers.org/Iwantto/nominate](http://stagemanagers.org/Iwantto/nominate).

BRAVO RICH COSTABILE!

# McCarter

THEATRE CENTER

STAGE MANAGEMENT &  
PRODUCTION DEPARTMENTS



**Congratulations Rich on the Del Hughes honor!**  
**All Our Love,**  
**Cheryl, Harris & Jake**

**Congratulations to Rich Costabile, Barbara Donner,  
Mary K Klinger, and Janet Friedman from your friends at**

# BROADWAY

---

# STAGE MANAGEMENT

---

# SYMPOSIUM

**Proud to celebrate your achievements and  
contributions to our noble profession.**

[www.broadwaysymposium.com](http://www.broadwaysymposium.com)



## A View from the Wings

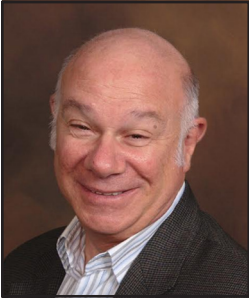
Sponsored by the Stage Managers' Association

A central region symposium.

October 26, 2019, Columbia College Chicago

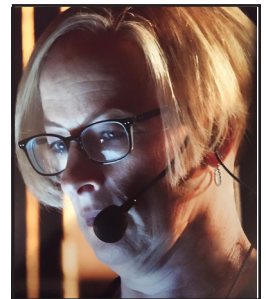
# Del Hughes Award Honorees

SMA



**RICH COSTABILE** has been fortunate to work with some of theater's most accomplished actors, directors, designers and stage managers. On Broadway – *The Odd Couple*, *Mark Twain Tonight!*, *Translations*, *A Day in the Death of Joe Egg*, *Anna in the Tropics*, *The School for Scandal*, and *George Abbott's Broadway*. For 17 years, he toured with Hal Holbrook's legendary *Mark Twain Tonight!* and before that was PSM for a tour of *Death of a Salesman*, starring Mr. Holbrook and Elizabeth Franz. He's worked on an unusual number of 1-person shows, among them *What You Will* with Roger Rees, *Paul Robeson* with Avery Brooks, *The Dragon and the Pearl* (later *All Under Heaven*) with Valerie Harper, *Grandma Moses: An American Primitive* with Cloris Leachman, *Claire Bloom: Sisters, Wives and Daughters* and the nominally-1-person musicals *Ella*, *Barbara Cook in Concert*, and *Lady Day at Emerson's Bar and Grill*. He spent two summers at the O'Neill National Music Theater Conference, ran away with the Big Apple Circus, and was on the SM teams for productions of *Irving Berlin's White Christmas* in Denver and in Detroit. Rich's resume reflects work on pretty much every type of live entertainment, including numerous special events and many off-Broadway and regional theaters, highlighted by eleven seasons with Gerald Freedman at Great Lakes Theater Festival. A Bronx native, Rich graduated from Regis HS in Manhattan, has a BA in Math from Fordham and Columbia Universities and has taught Stage Management at SUNY/Purchase and Mason Gross/Rutgers. Before theater found him, he was a high school math teacher and then a computer programmer with IBM. Now enthusiastically retired, he lives in Normandy Beach, NJ, with Randy Wilcox, his life partner of 27 years and husband since late 2013. Rich is Chairman emeritus of the Stage Managers' Association after serving over 20 years on its Board, and as Chairman for an unprecedented six terms.

**BARBARA DONNER** has been a stage manager at LA Opera since 1990, and is currently running her 85th production for the company. After graduating from the University of Cincinnati College-Conservatory of Music, Barbara quickly moved into the world of professional opera, working with San Francisco Opera, San Diego Opera, Opera Pacific, Opera Theatre of Saint Louis and Portland Opera. Barbara has worked with the LA Philharmonic, stage managing their produc-





tions of the Mozart / DaPonte trilogy—*Don Giovanni*, *The Marriage of Figaro*, and *Così fan tutte*—under the baton of Gustavo Dudamel, as well as Philip Glass' *The Civil Wars*, and Yuval Sharon's *Young Cesar and Atlas*. She has stage managed the highly acclaimed production of Bernstein's *On the Town* and Michael Tilson-Thomas' production of Beethoven's *Missa Solemnis* with the San Francisco Symphony. Barbara has also been part of the stage management team running the summer musicals at The Hollywood Bowl for the past 11 years.



**MARY K KLINGER** Broadway: *QED* with Alan Alda, *Angels in America*. National Tours: *Death of a Salesman*, *Teenage Mutant Ninja Turtles*. London: *Spunk*. Ojai Playwrights Conference, MainStreet Theatre Company: *Frederick*, *Oh Freedom*, Roald Dahls' *The Witches*, *Goldilocks*, *Stuart Little*. La Jolla Playhouse, South Coast Rep, Douglas Theatre CTG, Steppenwolf: *How To Be A Rock Critic*. Studio Theatre, DC. : *The Night Watcher*. Shakespeare Theatre Company, D.C.: *All's Well That Ends Well*, *Julius Caesar*. Shakespeare L.A. *Citizen Twain*

(with Val Kilmer), *Merchant of Venice*. Center Theatre Group, L.A. (selected): *The Night Watcher*, *Radio Golf*, *Gem of the Ocean*, *School for Scandal*, *Intimate Apparel*, *Topdog/Underdog*, *Ten Unknowns*, *The House of Bernarda Alba*, *The Molière Comedies*, *QED*, *In Real Life*, *Enigma Variations*, *Tongue of a Bird*, *Nine Armenians* (L.A. and Denver), *Molly Sweeney*, *Changes of Heart*, *Slavs!* (L.A. and La Jolla), *Angels in America*, *Parts 1 and 2*, *Bandido!*, *Unfinished Stories*, *Spunk*, *Jelly's Last Jam*. Geffen Playhouse & Intiman Playhouse: *Ruined*. Laguna Playhouse: *Buyer and Seller*, Act 3 (with Rita Rudner), *6 Dance Lessons in Six Weeks* (with Leslie Caron). Hartford Stage: *The Tempest*, *12th Night*, *MacBeth*, *La Despute*. The Old Globe: *Othello*, *A Midsummer Night's Dream*, *Titus Andronicus*, *Measure for Measure*, *Hamlet*, *Romeo and Juliet*, *Two Gentlemen of Verona*, *All's Well That Ends Well*, *Cyrano de Bergerac*, *Coriolanus*, *Merry Wives*, *12th Night*. Pasadena Playhouse: *Arms and the Man*, *Spoke Song*, *Look Homeward Angel*. Los Angeles Theatre Center: *The Kathy and Mo Show*, *Joe Turner's Come and Gone*, *Stars in the Morning Sky*, 1951-2006. Colony Theatre: *Old Wicked Songs*. *Handle With Care*. *Simply Complicated*. Other: Adjunct Professor of Stage Management at USC 1997 to 2007. Proud Member of Actors' Equity Association.

## Awards and Recognition Committee

SMA

Cheryl Mintz, Chair

Bob Bennett, Joseph Drummond, Martha Knight, Jimmie McDermott,  
Melissa A. Nathan, Robin Rumpf, Matt Stern

# The Founders Award

SMA

JANET FRIEDMAN graduated from Temple University with a degree in theatre, having also attended Hofstra University where she met her first mentor and lifelong friend, Arturo Porazzi. She moved to NYC in the spring of 1979, as a production assistant at Manhattan Theatre Club, and got her Equity card a year later. Within three years she had her first Broadway show, the original *42nd Street*. In 1981 she married fellow stage manager Barry Kearsley, and they worked happily together on that show as well as on *M Butterfly*. Also in 1981, she and Barry became founding members of the SMA, where she has served as Chair and Board Member. Janet has served as ASM for a dozen long-running hit plays and musicals and many industrials. Widowed in 1989, she continued doing Broadway, Industrials and the Radio City Christmas Show for five seasons. Shortly after Barry's death, she established a scholarship fund in his name at Hofstra University. Currently retired from full-time stage-managing, she does the occasional corporate meeting. Janet keeps busy keeping tabs on eight nieces and nephews, and 13 grand-nieces and nephews spread out all over the country.



Congratulations Janet

from your brothers

Mark, Bill and Ken

who are

Very Proud of You!!!



**CONGRATULATIONS,  
JANET!**

**LOVE,**

**HAL**



**The Actors Fund,  
for everyone  
in entertainment.**

Stage managers are the backbone of our theatrical community. The Actors Fund is proud to be there for everyone in entertainment including the stage management community with our free and confidential programs and services!

**CONGRATULATIONS**

Rich Costabile  
Barbara Donner

Mary K Klinger  
Janet Friedman



Brian Stokes Mitchell  
*Chairman*

**actorsfund.org**



Joseph P. Benincasa  
*President and CEO*

**TWINS  
TALK  
THEATRE  
PODCAST  
WITH CINDY AND STACY**



**Congrats to the 2019 awardees!**

**[twinstalktheatre.podbean.com](http://twinstalktheatre.podbean.com)**



## *The Board of Directors*

### Officers

Chair, **Elynmarie Kazle**

First Vice Chair, **Amanda Spooner**

Second Vice Chair, **Hope Rose Kelly**

Treasurer, **Bill Hare**

Corresponding Secretary, **Adrienne Wells**

Recording Secretary, **Kristi Ross-Clausen**

### Directors at Large

Cynthia Hennon Marino

Claudia Lynch

David McGraw

Cheryl Mintz

Oona Newman

Matt Stern

### Regional Directors

Anthony O. Bullock, Eastern

Joseph Drummond, Central

Joel Veenstra, Western

### Past Chairs

First, Jon Goldman

Third, Marguerite Price

Chair Emeritus, Rich Costabile

### Non-Board Regional Leadership Positions

**Erin Joy Swank**, Vice Regional Rep Western: Denver

**Erik Smith**, Vice Regional Rep Western: Las Vegas

**Maria Sorce**, Vice Regional Rep Western: Pacific North West

**Morgan J. Zupanski**, Vice Regional Rep Western: Greater Los Angeles

**Rusty Cloyes**, Vice Regional Rep Western: Dallas/Texas

**Lora Powell**, Vice Regional Rep Western: San Diego, CA

**Jonathan R Nook**, Vice Regional Rep Central: Chicago

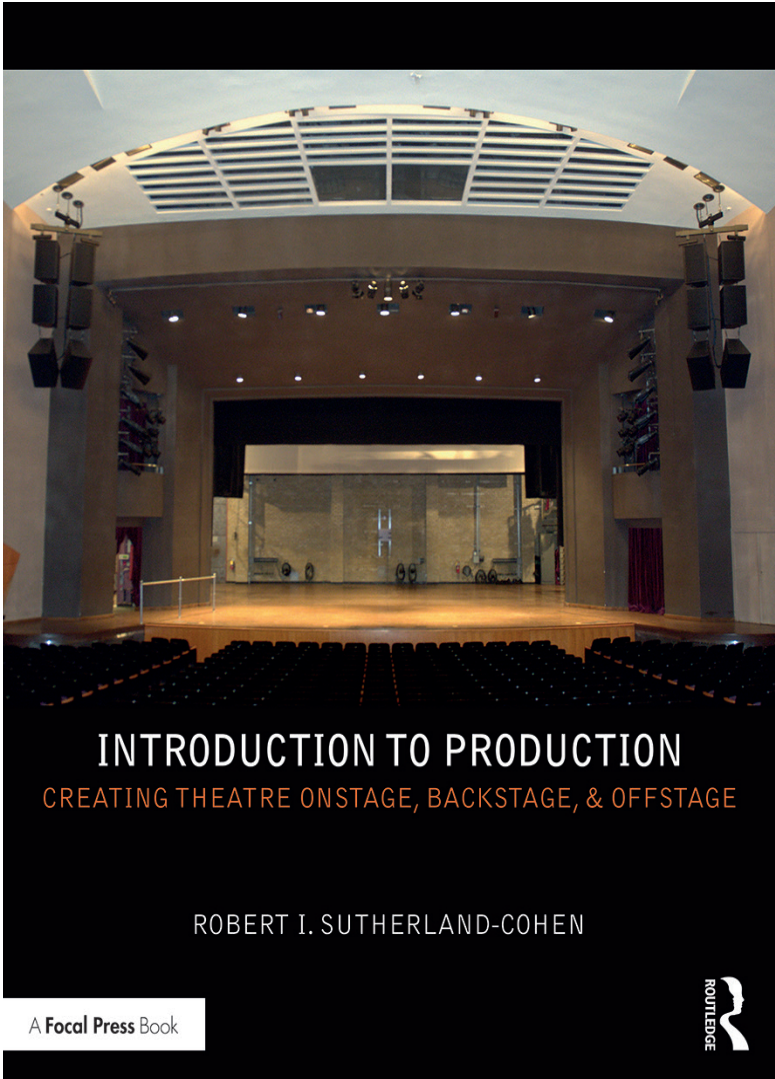
**Veronica Zahn**, Vice Regional Rep Central: Milwaukee, WI

**Amy Paige**, Vice Regional Rep Central: St. Louis, MO

**Jenna Fink**, Vice Regional Rep Central: Northeast Ohio

**Claudia Lynch**, Vice Regional Rep East Coast: Florida

**Miriam Salzman**, Vice Regional Rep East Coast: NYC



# INTRODUCTION TO PRODUCTION

CREATING THEATRE ONSTAGE, BACKSTAGE, & OFFSTAGE

ROBERT I. SUTHERLAND-COHEN

A Focal Press Book



Available at Amazon.com and other booksellers

**Congratulations!**

**Rich and Janet**  
on your remarkable achievement

Best Wishes,  
Robert & Patricia Sutherland-Cohen

OJAI  
PLAYWRIGHTS  
CONFERENCE

Congratulations and Bravo!!  
**Mary K Klinger**

from Robert Egan and your many friends at  
**Ojai Playwrights Conference**

Thank you for your support and involvement in  
developing exciting new works for the American theatre.

[www.ojaiplays.org](http://www.ojaiplays.org)

*Congratulations Rich Costabile,  
my beloved stage manager  
and longtime collaborator.*

*I am forever indebted.*

*Serald Friedman*



Congratulations to

**BARBARA DONNER**

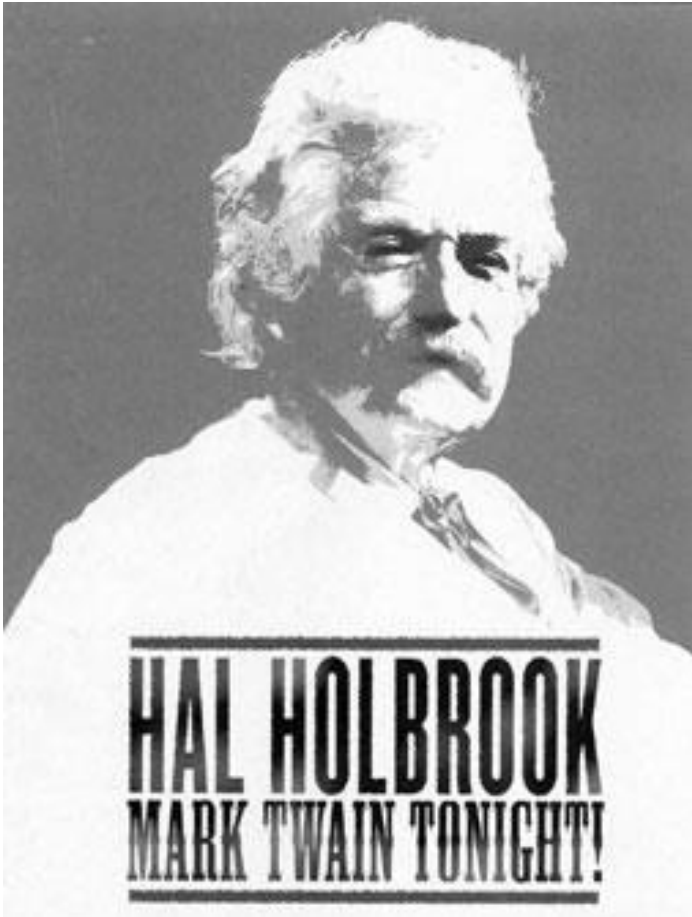
on this prestigious honor and her upcoming  
500th performance with LA Opera.

She is one of the best in the business  
and we are proud to have her  
lead the way backstage.





**With admiration and gratitude,  
we celebrate Rich on receiving the  
Del Hughes Award!  
Hal and Joyce**



# Congratulations Barbara!

from all of your colleagues at the  
LA Phil and the Hollywood Bowl

*Michael Vitale*

*Taylor Comen*

*Lyla Forlani*

*Kimberly Mitchell*

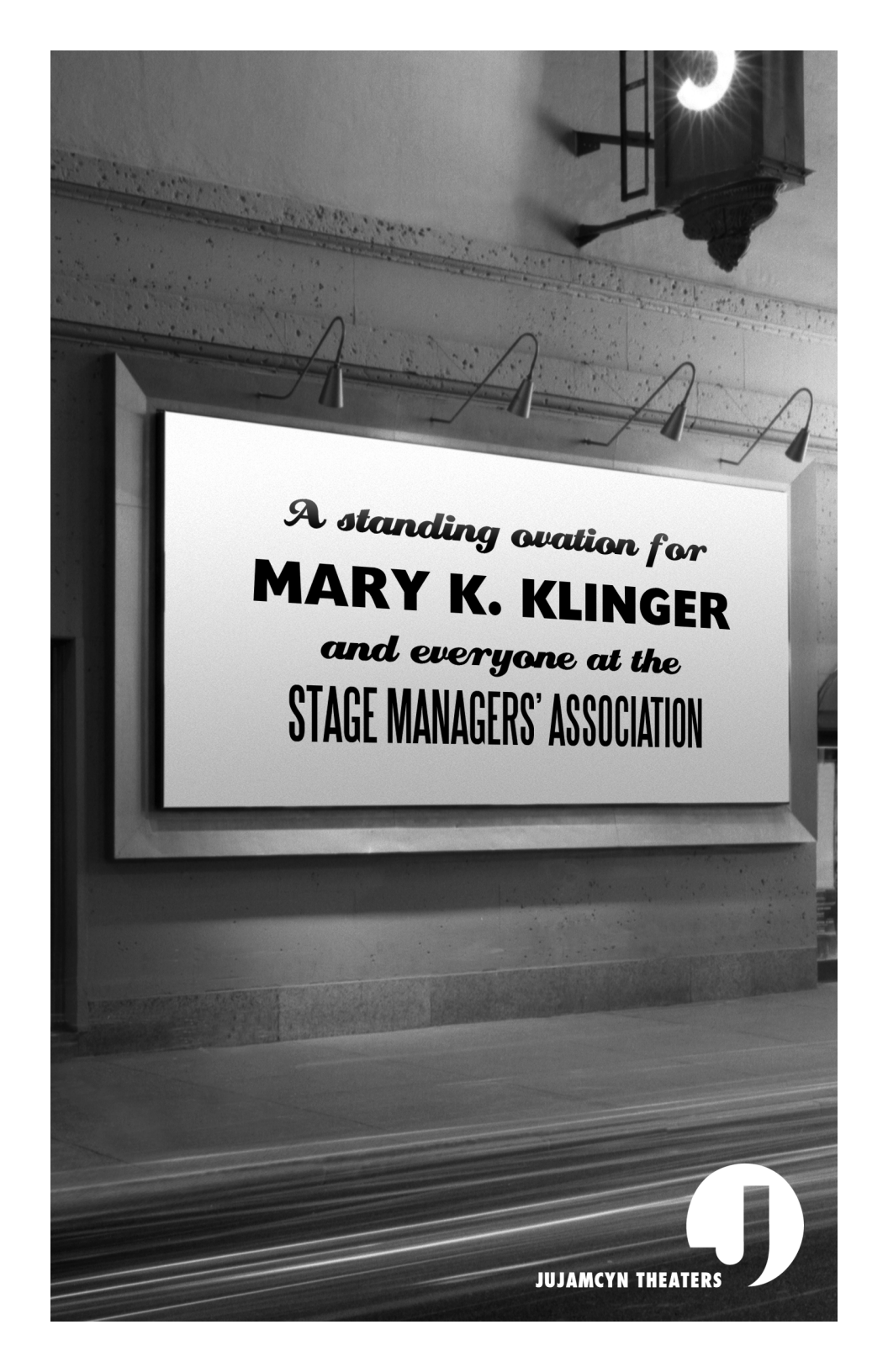
*Alex Rehberger*

*Lindsay Lowy*



**LA PHIL**

**GUSTAVO DUDAMEL**  
Music & Artistic Director



*A standing ovation for*  
**MARY K. KLINGER**  
*and everyone at the*  
**STAGE MANAGERS' ASSOCIATION**

JUJAMCYN THEATERS



# *Congratulations, Rich!*



*With Love,*

*Your favorite brother, Bob*

*Your favorite nephew, Joe*

*Elizabeth Franz & Christopher Pelham*

*Krosby Roão Roza, Proud Son*

*The Roza Crew*

*John & Susan Z., your NB Buddies*

*Deb, Mimi, & Randy*

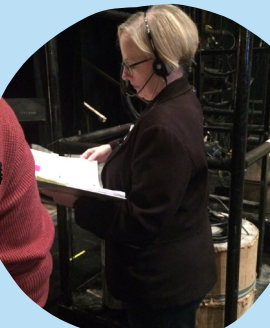


**CONGRATULATIONS**

# **BARBARA DONNER**

**FROM THE STAGE MANAGERS OF LA OPERA**

Not only are you absolutely deserving of this life time achievement award, you're a good human, a great friend and a load of fun. We love you!







Stage managers are the heart, soul and muscle behind the generosity of spirit that drives all we do.

We celebrate and thank all stage managers and salute the members of the  
**Stage Managers' Association.**

Congratulations to tonight's honorees.

**Rich Costabile, Barbara Donner**  
and **Mary K Klinger**  
The Del Hughes Award

And longtime friend and advocate  
**Janet Friedman**  
The Founders Award

We honor their dedication and commitment to the work of being a stage manager.

[broadwaycares.org](http://broadwaycares.org)

**What we do together makes a difference**